

**EN**  
Equipment  
North Inc.

# Minerscopic 8044

## Underground Telescopic Forklift

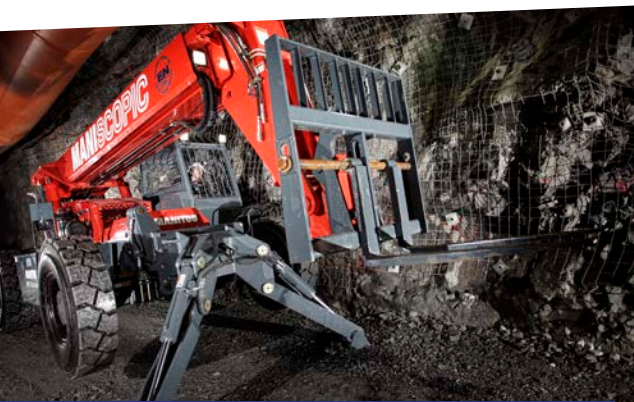
Robust construction materials and minimalist design make Equipment North's Minerscopic 8044 an underground workhorse.



*Unit is fully mine-approved in its standard configuration—no additional testing is necessary w*



*Unit is fully mine-approved in its standard configuration—no additional testing is necessary*



*With 8000 lbs capacity and 44' of reach, the Minerscopic 8044 is up to any task.*

### **BUILT TO LAST**

Minimalist design is the key to making the Minerscopic 8044 easy to service. Eliminating electronics allows your service technicians to perform repairs on site, while rugged all-steel construction and reduces downtime caused by damage to flimsy fiberglass and plastic components.

### **KEY FEATURES**

- ⦿ MINE-APPROVED TRIPLE-REDUNDANT BRAKING SYSTEM
- ⦿ MINING-TIRE EQUIPPED
- ⦿ HIGH LUMINOSITY LED LIGHTING
- ⦿ FIRE-RESISTANT WIRING
- ⦿ CERTIFIED ROPS/FOPS

### **COMPACT SIZE**

Intended for use in ramp-access mines or to be disassembled and slung to the working level, the Min-erscopic 8044 boasts 8000 lbs lifting capacity, 44' of vertical reach and over 30' of forward reach.

### **AVAILABLE OPTIONS AND ACCESSORIES**

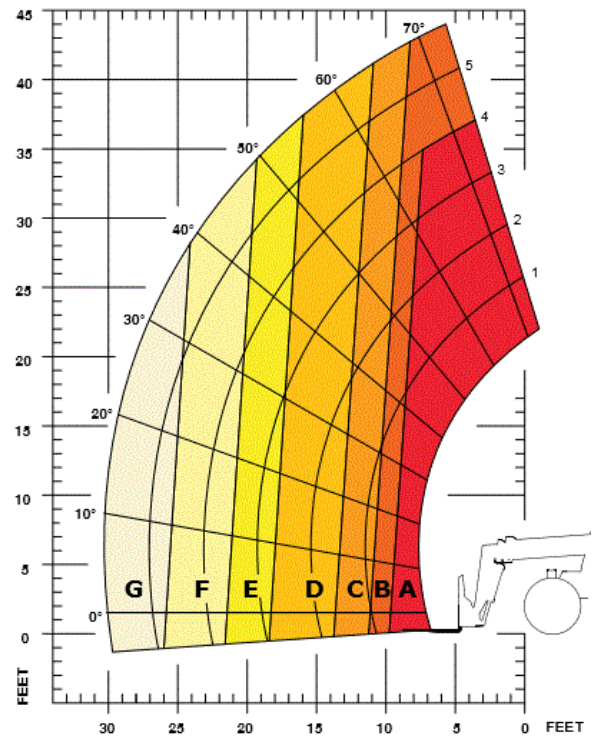
- ⦿ CAB W/ GLASS OR STEEL GRILL ENCLOSURE
- ⦿ COLLAPSIBLE MANBASKET WITH REMOTE LOCK OUT
- ⦿ VARIETY OF HYDRAULIC AND FIXED QUICK-ATTACH JIB BOOMS
- ⦿ WIDE SELECTION OF FORKS AND BUCKETS



## SPECIFICATIONS

<b>Engine Type</b>	Water-cooled diesel
<b>Engine Output</b>	115 HP
<b>Capacity</b>	8,000 lbs
<b>Max. Lift Height</b>	44'0"
<b>Max. Forward Reach</b>	30'5"
<b>Min. Turning Radius</b>	13'8"
<b>Ground Clearance</b>	16"
<b>Dimensions</b>	7'10" H x 8'0" W x 19'10" L
<b>Operating Weight</b>	23,500 lbs
<b>Service Brake</b>	4-wheel, hydraulically actuated internal wet disc brake
<b>Emergency Brake</b>	Spring-applied, hydraulic release (SAHR) on front axle
<b>Driveline Brake</b>	Mico SA/HR enclosed disc on driveline
<b>Tires</b>	1220 x 20 mining tire
<b>Drive</b>	4-wheel drive
<b>Transmission</b>	Dana 3-speed powershift
<b>Max Travel Speed</b>	18.8 mph (30.3 km/h)
<b>Carriage Rotation</b>	129°

## LOAD CHART



### SUDBURY

269 Fielding Rd, Lively  
 ON Canada P3Y 1L8  
 P 705.682.1120 F 705.682.2728

### TIMMINS

99 Lidanri Court, Timmins,  
 ON Canada P4R 0K1  
 P 705.360.5145 F 705.360.5199

**Toll Free 1.888.385.8559**  
[www.equipmentnorth.com](http://www.equipmentnorth.com)