

# Minerscopic 625

## Underground Telescopic Forklift

Equipment North's Minerscopic 625 telescopic forklift is designed specifically to work in tight, demanding underground environments.



*Intuitive controls and excellent visibility make Miner V4-6 contribute to increasing productivity,*



*Wide selection of options and attachments (including manbaskets)*



*Unit is fully mine-approved in its standard configuration — no additional testing is necessary*

### **KEEPING YOUR SAFE**

With a certified ROPS/FOPS, catalytic exhaust, triple-redundant, failsafe braking system and fire-resistant wiring you can rest assured the Minerscopic 625 will contribute to making your mine a safer work environment.

### **KEY FEATURES**

- ◉ MINE-APPROVED TRIPLE-REDUNDANT BRAKING SYSTEM
- ◉ MINING-TIRE EQUIPPED
- ◉ HIGH LUMINOSITY LED LIGHTING
- ◉ CERTIFIED ROPS/FOPS

### **COMPACT SIZE**

At 6'7" tall and less than 6' wide, the Minerscopic 625 can maneuver and work in areas that other fork-lifts cannot. The telescopic boom can reach into confined spaces, keeping workers out of harm's way.

### **AVAILABLE OPTIONS AND ACCESSORIES**

- ◉ FULLY ENCLOSED CAB WITH A/C AND HEAT OR STEEL GRILL ENCLOSURE
- ◉ 500 LBS OR 3500 LBS CAPACITY QUICK-ATTACH MAN-BASKET
- ◉ VARIETY OF HYDRAULIC AND FIXED QUICK-ATTACH JIB BOOMS
- ◉ WIDE SELECTION OF FORKS AND BUCKETS

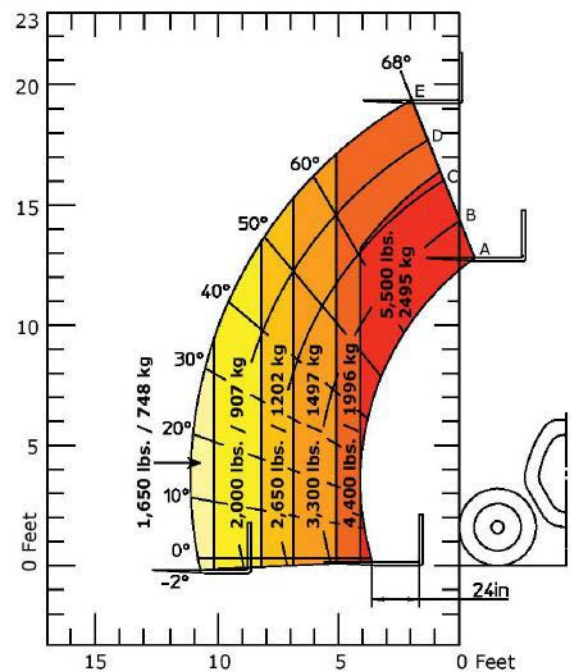




## SPECIFICATIONS

<b>Engine Type</b>	Water-cooled diesel
<b>Engine Output</b>	74.3 HP
<b>Engine Displacement</b>	201 cu. in.
<b>Capacity</b>	5,500 lbs
<b>Max. Lift Height</b>	19'3"
<b>Min. Turning Radius</b>	10'6"
<b>Ground Clearance</b>	15"
<b>Dimensions</b>	6'7"H x 5'11"W x 12'7"L
<b>Operating Weight</b>	10,850 lbs
<b>Service Brake</b>	Enclosed wet disc in front axle
<b>Emergency Brake</b>	SA/HR wet disc in front axle
<b>Driveline Brake</b>	Mico SA/HR enclosed disc on driveline
<b>Tires</b>	18" x 13.7"
<b>Drive</b>	4-wheel drive
<b>Transmission</b>	Automatic hydrostatic
<b>Max Travel Speed</b>	25.6 km/h
<b>Carriage Rotation</b>	129°

## LOAD CHART



### SUDBURY

269 Fielding Rd, Lively  
ON Canada P3Y 1L8

P 705.682.1120 F 705.682.2728

### TIMMINS

99 Lidanri Court, Timmins,  
ON Canada P4R 0K1

P 705.360.5145 F 705.360.5199

**Toll Free 1.888.385.8559**  
**www.equipmentnorth.com**